

# AD-AI

## Advertisement Intelligence

AD-AI IS A STRATEGIC TOOL, UNCOVERING THE PRECISE DETAILS OF WHAT UNFOLDS WITHIN A DESIGNATED AREA . IT OFFERS A DYNAMIC ALTERNATIVE TO CONVENTIONAL TACTICAL INQUIRIES.

**HARNESSES THE POWER OF BIG DATA TO COLLECT VAST QUANTITIES OF INFORMATION FROM EVERY SMART DEVICE WITHIN A SPECIFIC AREA OF INTEREST**

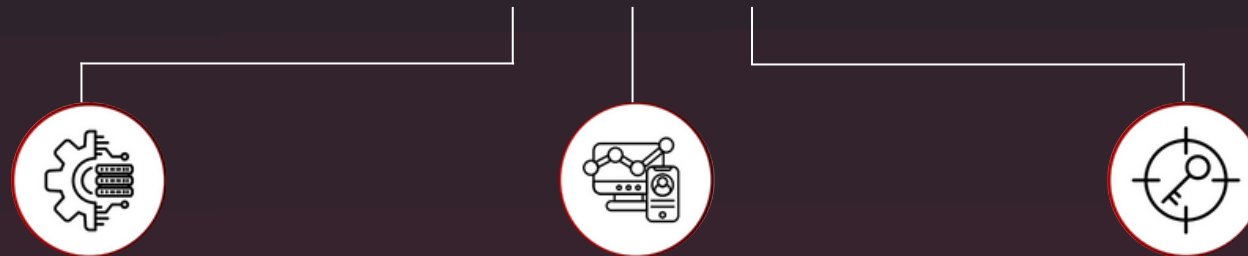


# AD-AI

## THE CAPABILITIES

UNVEIL THE IDENTITIES OF INDIVIDUALS WITHIN A LOCATION AND ILLUMINATE THEIR ACTIVITIES – INCLUDING WHEN, WHERE, AND WITH WHOM – PROVIDING INVALUABLE INSIGHTS FOR STRATEGIC DECISION MAKING.

### THE SYSTEM



#### BIG DATA AD INTELLIGENCE

- Area based intelligence
- Massive data ingestion
- User behavior
- Apps on device

#### AD INTELLIGENCE

Understand movement patterns, user activity and important device parameters

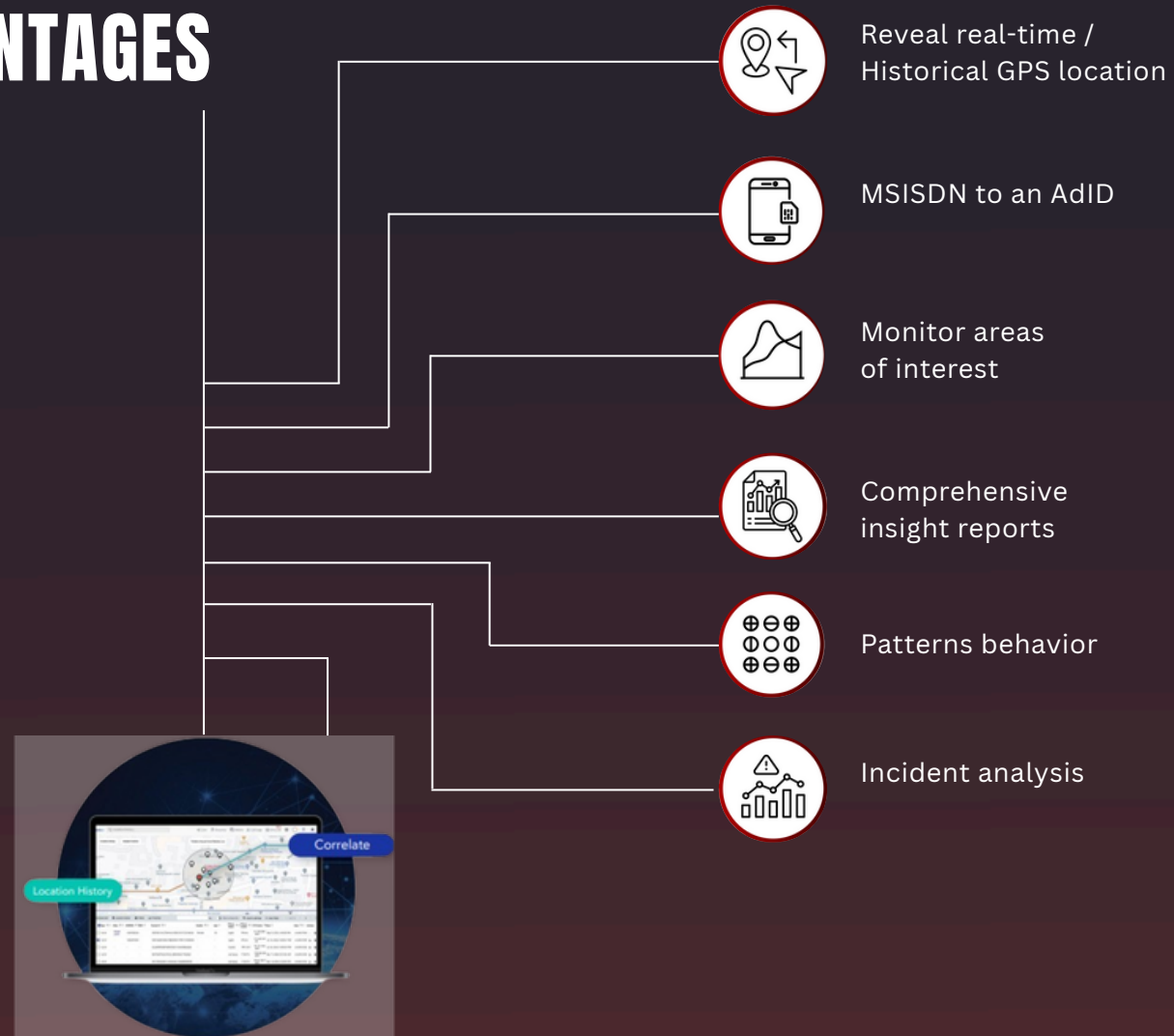
- OS version
- Phone model
- Installed apps
- Network type
- Ip address
- Location
- Habits
- Demographics

#### UNCOVER INTELLIGENCE INVESTIGATION CLUES

- Top locations & Meeting points
- Movement patterns
- Behavior & habits
- Understand relationships
- Detect anomalies
- Set alerts based on activity

# AD-AI

## KEY ADVANTAGES



## OPERATIONAL PROCESS&WORKFLOW

TRIGGER AN INVESTIGATION FOCUSED ON A SPECIFIC AREA OF INTEREST, UNCOVERING THE ADIDS ASSOCIATED WITH DEVICES PRESENT AT ANY GIVEN MOMENT. CROSS-REFERENCING WITH LARGE DATABASES, REVEAL THE MSISDENS LINKED TO THESE DEVICES, DELIVERING CRITICAL INSIGHTS FOR FURTHER ANALYSIS AND ACTION.



AD-AI  
activated



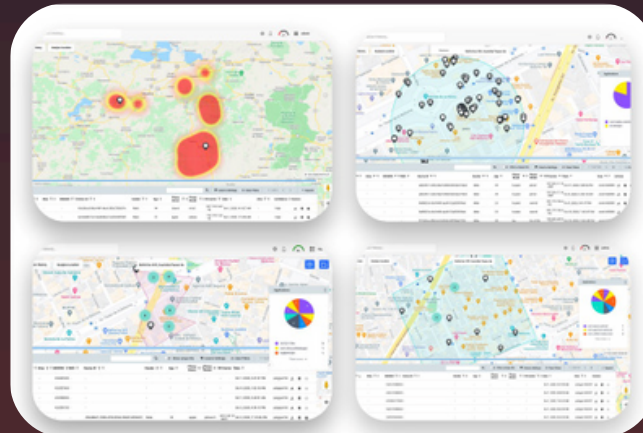
Select an area  
of interest



Reveal real-time  
or historical GPS  
location



Investigate behavior  
relationships  
and activities





# ATLAS GGS

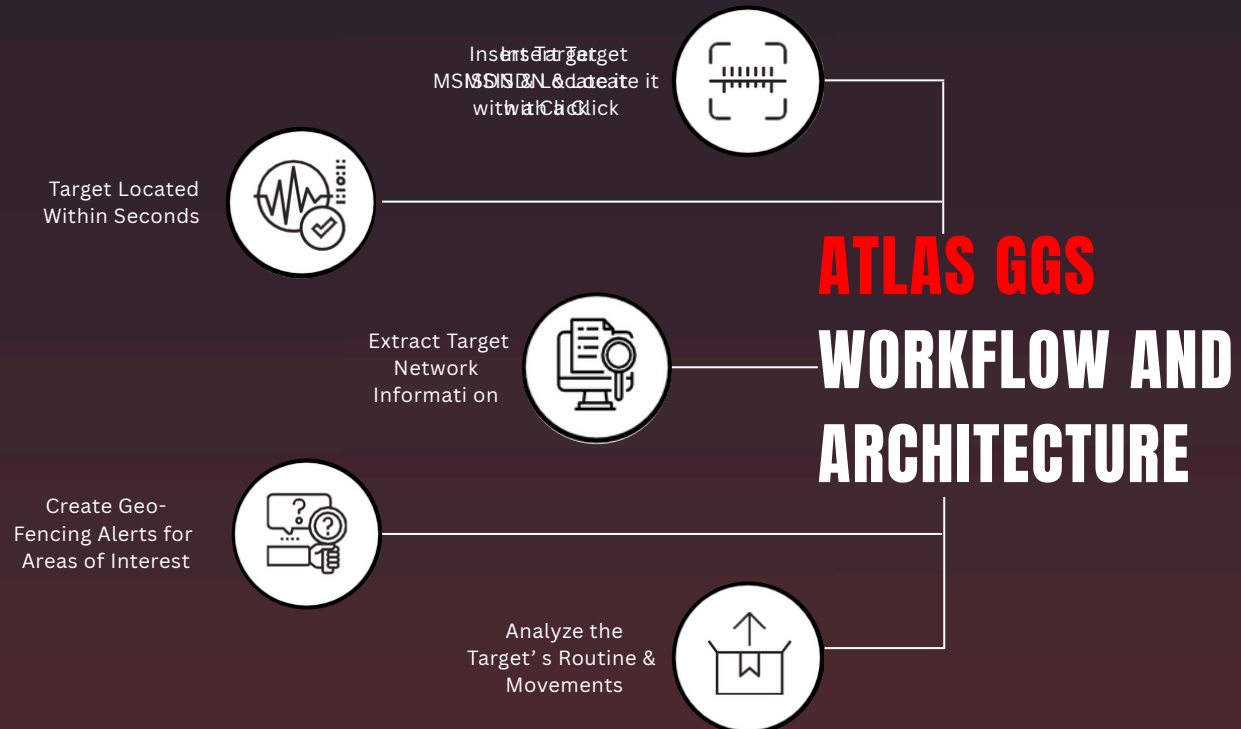
## Global Geolocation System

A GLOBAL GEOLOCATION SYSTEM REMOTELY LOCATES TARGETS USING MAP-BASED INTELLIGENCE OVER 2G, 3G, 4G & 5G NETWORKS



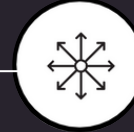
## ATLAS GGS BASED ON

The SS7 is a signaling system 7 for common channel signaling system used in international and local telephone networks



# ATLAS GGS

## KEY OPERATIONAL FEATURES



Out of the Box  
solution



Centrally  
Controlled



User  
Friendly



Does not require any  
domain expertise



Rapid  
Deployment



Mobile and  
Adaptable

# ATLAS GGS ACTON BUTTONS



Location finding

Geofencing

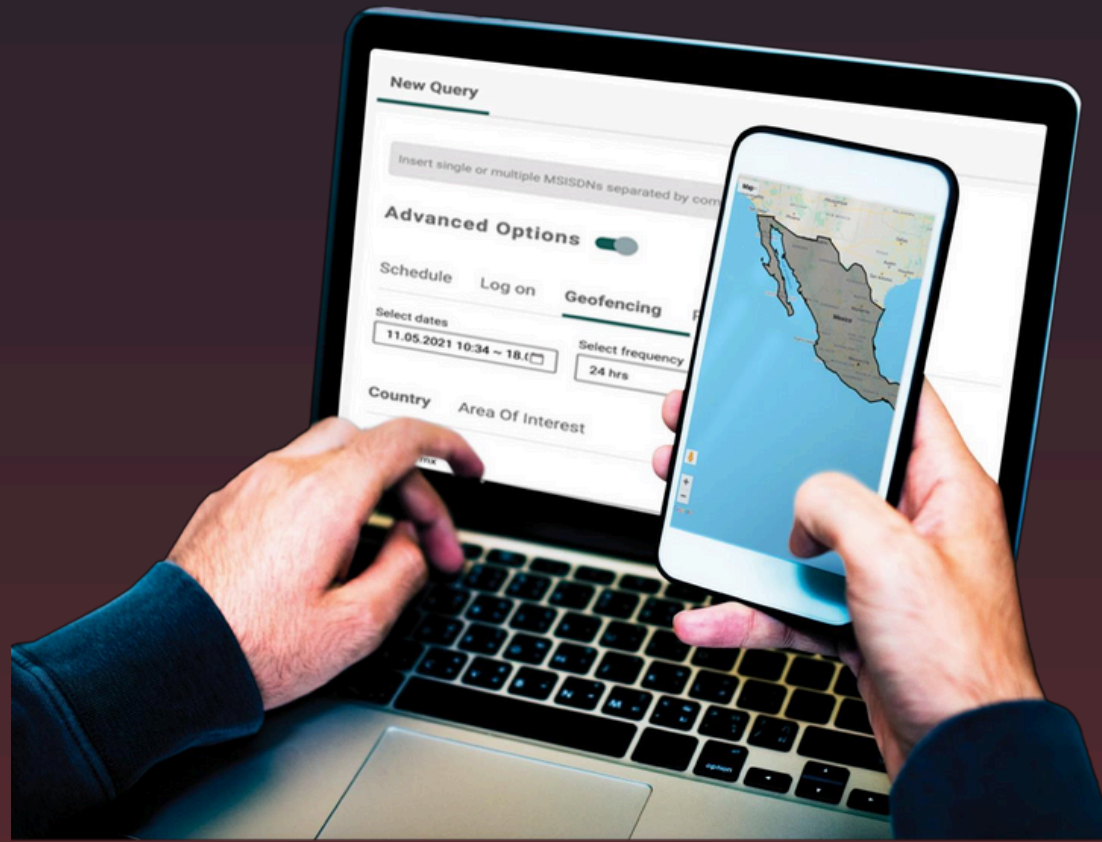
Neighboring Cells

# ATLAS GGS GEOFENCING

GEOFENCING NOTIFIES YOU WHEN A TARGET  
ENTERS OR LEAVES A SPECIFIC AREA:

COUNTRY

Area of Interest

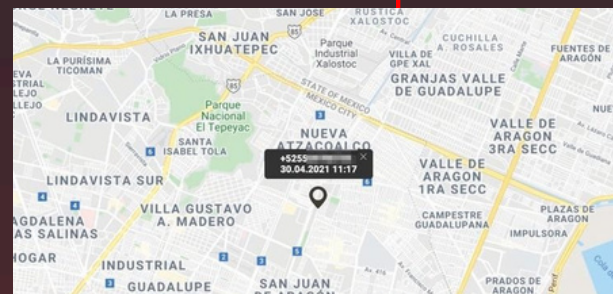


# ATLAS GGS GEOLOCATION ANALYTICS



**HEATMAP:** Graphical representation of the historical positions of a target

**TIMELINE:** Shows all historical target location information as pins.



**LAST SEEN:** This shows the most recent target location information.

# ATLAS GGS PREDICTED LOCATIONS

Data analysis engine that predicts the probability of where the target will be at a future time defined by the user.

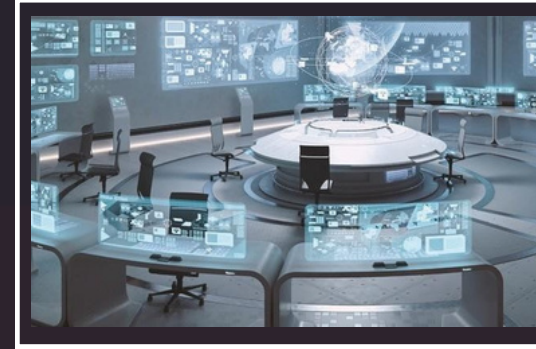


# ATLAS GGS INTELLIGENCE REPORT

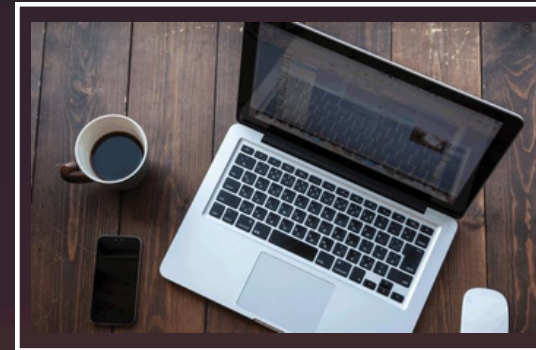


# ATLAS GGS PLATFORMS

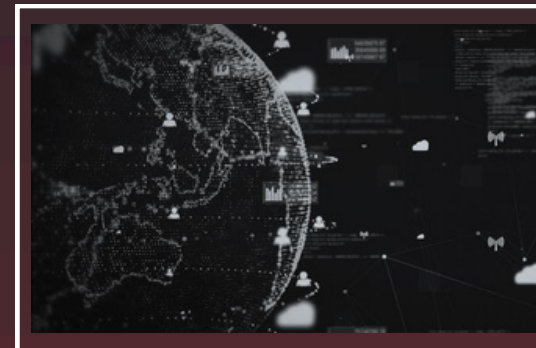
**STATIONARY**



**MOBILE**



**CLOUD BASED**



# BTSSTRESSOR

## BTS DENIAL OF SERVICE

The BTS Stressor offers an Active method for stressing cellular base stations across All technologies and frequencies. Utilizing Combined Methodologies, it induces simulations of Denial of Service (DOS), causing severe service disruptions and overloading the cellular infrastructure.

This sophisticated solution is engineered to challenge commercial cellular base stations (BTS) and IMSI Catchers, offering unparalleled capability in disrupting adversary communications.

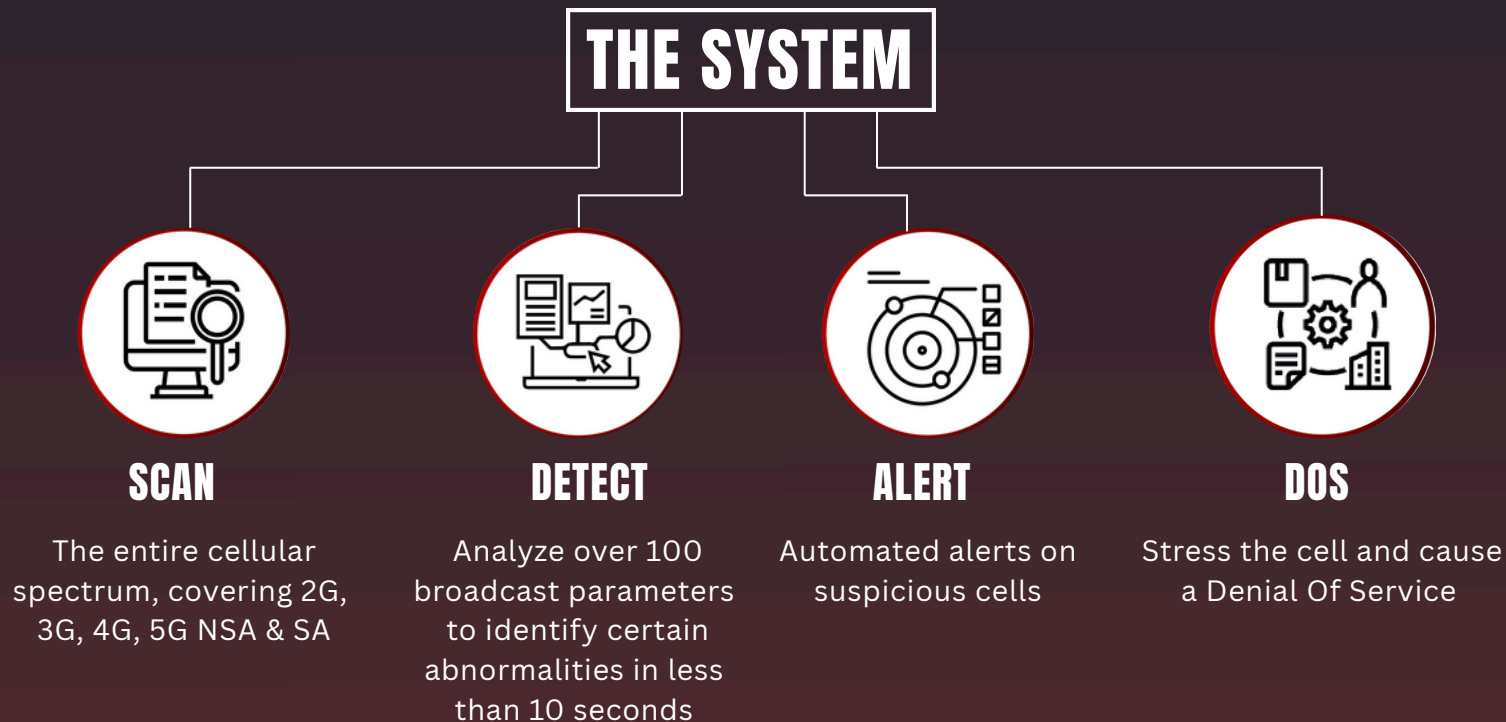




# BTSSTRESSOR

## THE CAPABILITIES

The system employs a series of Combined Disruptions aimed at inducing either a complete overload of IMSI Catcher BTS / commercial cellular base stations or triggering a no-service mode for registered phones.



# BTSSTRESSOR

## KEY ADVANTAGES



Comprehensive Spectrum Scanning



Advanced Abnormality Analysis



Real-Time Suspicious Activity Alert



Robust Combined Stress Capabilities



Manual / Automatic Operation



Incident analysis

# MERCURY ACI

## Active Cellular Interception

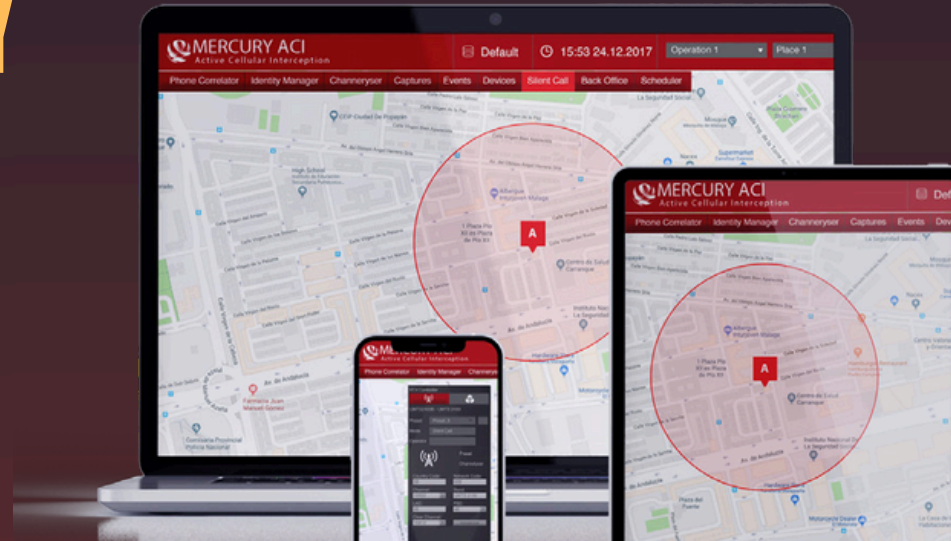
AN ACTIVE CELLULAR INTERCEPTION (ACI) IS A TACTICAL SYSTEM THAT ACTIVELY INTERFERES IN COMMUNICATIONS BETWEEN CELL PHONES AND BASE STATIONS, ONCE INTERCEPTED, IT GAINS FULL CONTROL AND MANIPULATES IN MULTIPLE WAYS

# MERCURY ACI

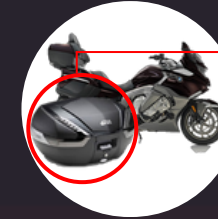
## PRODUCTS

## FAMILY

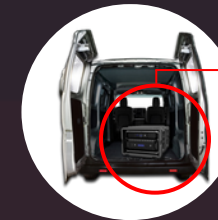
A TACTICAL SYSTEM FOR INTERCEPTING TARGETED CELLPHONES. A COMPACT, DISCRETE AND POWERFUL PLATFORM THAT PLACES OPERATORS IN THE MIDDLE OF TARGET COMMUNICATIONS AND ENABLES PROACTIVE, COUNTERINTELLIGENCE OPERATIONS



# KEY OPERATIONAL FEATURES



COMPACT AND COVERT  
MOTORCYCLE MOUNTED  
SYSTEM



VEHICLE  
DEPLOYMENT



COMPACT AND COVERT  
BACKPACK TACTICAL  
SYSTEM



DUAL BTS DRONE  
TACTICAL SYSTEM

# FAMILY PRODUCTS

## KEY OPERATIONAL FEATURES



### EXTRACT ID

Extracts the identity of the target



### AREA JAMMING

Enables jamming of target's area



### BLOCK

Blocks the target's calls and SMSs



### MANIPULATE



### FAKE CALLS

Fakes calls and SMSs from\ to the target

# FAMILY PRODUCTS

## KEY OPERATIONAL FEATURES

- Supports all Network protocols (GSM, UMTS, LTE)
- Enables listening and recording of Voice calls
- Intercepts SMS Messages
- Operates with all service Providers
- Locates the Direction of the Target
- Highly Portable



# FAMILY PRODUCTS KEY OPERATIONAL ADVANTAGES



Light weight and compactible (small dimensions)



Internal 60W Power amplifier



Remotely controlling the system from a phone app



Wi-Fi connection



Can be operated from a tablet



Various deployment options:  
backpack- car- motorcycle- drone



4G silent call with internal  
TDD in the box



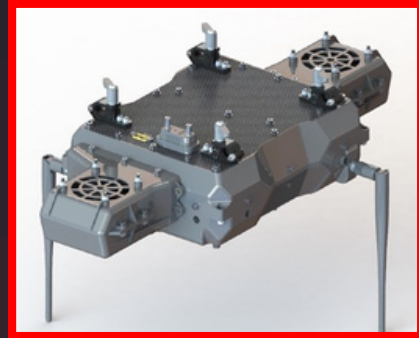
Only two hidden antennas



Easy deployment









# NYX DETECTOR

## FAKE CELL DETECTOR

The NYX DETECTOR detects the use of IMSI Catchers and Active Interception Systems. Robust, with outstanding sensitivity, the platform is designed to provide 24/7 peripheral protection where deployed.

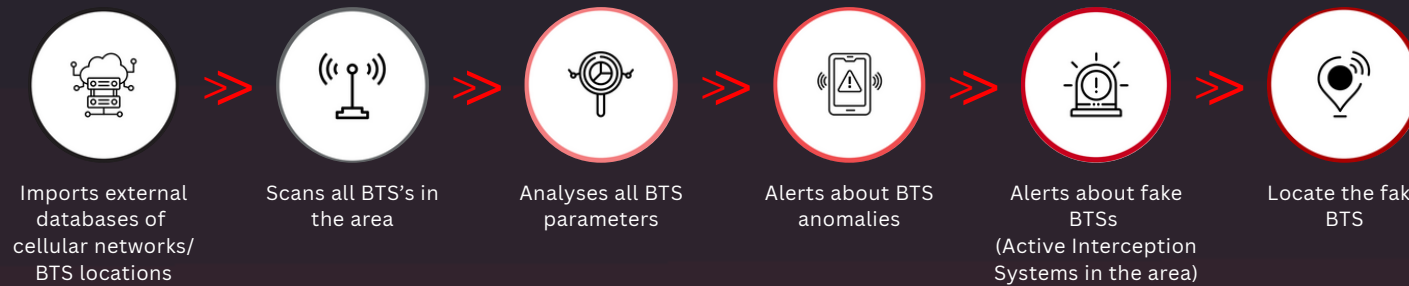
# NYX DETECTOR

A TACTICAL SYSTEM  
FOR THE DETECTION OF  
IMSI CATCHER

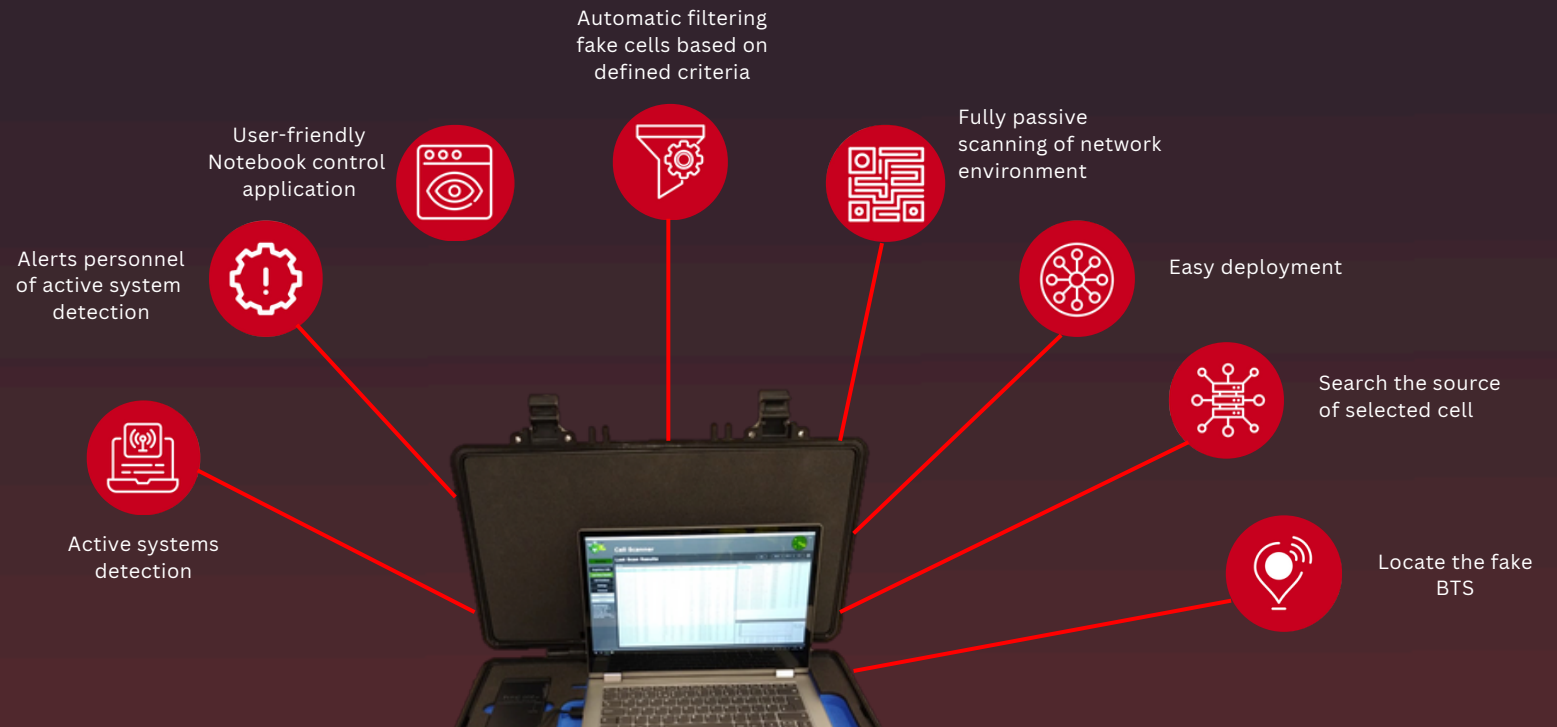


# NYX DETECTOR

## OPERATIONAL WORKFLOW



## KEY FEATURES



## DETECTION

Once an active system has been found an alert is sent to the operator and all relevant personnel, and the location is presented.

## PROTECTION

The system is designed for 24/7 monitoring.

## ACCURACY

No false positives by using multiply verification parameters.

## COVERT

The system is fully passive no transmission therefore it cannot be detected nor traced.

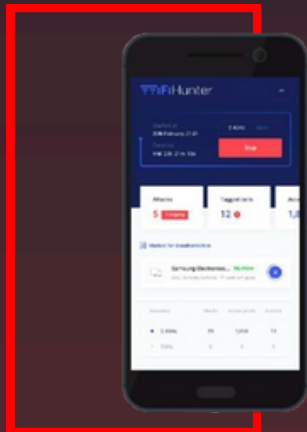


# NYX DETECTOR UPGRADES

## Wi-Fi intrusion detection support

NYX Detector can be upgraded to support WiFi intrusion detection, which can run alongside with the Fake cell detection.

The WiFi detector scan both 2Ghz and 5Ghz, detected real-time attacks such as KRACK, WPS & brute force, and locate its source. It can also disconnect specific clients from the network.



## External directional finding unit

The external directional finding unit includes an additional scanning module and a directional antenna. The antenna helps identify the direction of the signal source, therefore improving the search effectiveness. The additional scanning unit allows scanning and searching at the same time.





# SOTERIA

## SECURITY SAFETY TECHNOLOGY



Soteria is a world leader in our field, pioneering innovative frontiers of intelligence since 2009 with tens of government installations worldwide. Soteria developed UGINE™, a unified system for data fusion research and investigation, a robust, full-cycle WEBINT environment featuring a realtime analytics platform with full web coverage.

Founded by intelligence agency professionals, Soteria is a privately held company that develops and markets cutting edge Intelligence Solutions and Platforms.

Customer satisfaction is at the heart of everything we do, and we pride ourselves on post-install support that is both efficient and useful.

## THERE IS NO 'CATCHING UP' WITH INTELLIGENCE

### Unify Your Data

With full-spectrum access to critical resources, UGINE™ creates a full intelligence picture from many different pieces. Empower analysts with the data they need.

### The Intelligence Edge

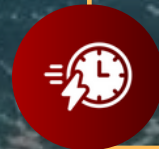
UGINE™ fully integrates WEBINT tools, diving deep into data to empower organizations with continuously enriched awareness and accelerated intelligence.

### Always Alert, Always Ready

Analysts and operators facing complex, large scenarios can focus on what counts with UGINE™ real-time situation awareness and rapid alerts.

### Speed and Savings

UGINE™'s small data footprint ensures critical resources are focused on collection, not collation. The highly efficient inverted index sidesteps database duplication and dramatically lowers overhead.





## Gain a **UNIFIED VIEW**

across sensors  
and systems



## Generate **PREDICTIVE**

Insights



## **RESPOND** **PROACTIVELY**

with the right  
operational profile



Achieve Effective  
**SITUATIONAL**  
**AWARENESS**



Access  
**VITAL**  
**INFORMATION**  
in real time



UGINE™ uses a powerful integration engine to enrich and enhance the power of data streams, on demand. Fuse your existing sensors and sources to innovative web and social media analytics.

### **Adaptive Solution**

UGINE™ seamlessly connect to all your data repositories providing immediate value from cross-system data fusion. With auto data mapping and self-data-discovery, connecting a new source is a simple task – not a multi-month expert project. Furthermore, the UGINE™ Adaptive Data Model (ADM) can fit into your organization’s “modus operandi” shortening the traditional learning curve of a new system from months to days.

### **Hybrid Index**

The UGINE™ engine is built on a hybrid index – best suitable for handling both structured and unstructured data efficiently and effectively, with minimum data duplication and without overloading the source systems.

### **Data Sense-making**

UGINE™ combines Natural Language Processing (NLP) and a semantic engine for big data sense-making. By correlating extracted Entities, Topics and Relations with data patterns and major events, UGINE™ provides much greater insight into risks and investigation with actionable recommendation.

### **Customizable Dashboards**

UGINE™ comes with a comprehensive set of dashboards, administrator and user reports that can be easily modified, customized and extended to provide the highest productivity and user experience.

# WINTERIA

## WEB INTELLIGENCE SYSTEM

Developed by intelligence specialists, WINTERIA is a holistic, fully integrated, Web Intelligence platform designed for comprehensive intelligence gathering and investigation management. WINTERIA dives into the ocean of data available in open, as well as covert sources, throughout the various online and darknet platforms.

WINTERIA provides multilingual and multisource collection and analysis capabilities, as well prompt alerting and advanced reporting capabilities, aimed at enhancing and leveraging the intelligence collection and investigation workflow.

WINTERIA offers a full-suite intelligence solution, including advanced features and capabilities



### PROFILER

Aimed at rapid background profiling of targets, WINTERIA Profiler executes prompt and complex search throughout the various social media and mobile platforms, uncovering targets' online as well as offline presence. Therefore, the collected data is enriched by the system, providing full overview of the target entity.





## WIDE SEARCH & Case Management

Throughout advanced and distinctive methods, WINTERIA Wide Search module is designed to execute multi-layered complex intelligence gathering, covering websites, social media platforms, darknet hidden services, Telegram groups and mobile platforms. Moreover, all data is indexed within the system, and advanced analytical insights are established and generated for each investigation, uncovering potential leads and further pivots.

## WIDE SEARCH & Case Management

WINTERIA Compass is a unique social-based IP extraction tool, aimed at uncovering targets' IP address and their estimated geolocation via advanced technology and distinctive Virtual HUMINT methods, without interception or any offensive actions. The tool requires establishment of minimal Virtual HUMINT communication with the target via instant messaging applications, hence the IP address alongside the precise timestamp, and the estimated geolocation of the target can be automatically extracted.



## DARKNET SEARCH

WINTERIA Dark dives into the deepest waters of the internet and uncovers the most protected and clandestine online discourse, to support broad intelligence operations from financial intelligence to Cyber Threat Intelligence. Throughout exclusive private sources and unique collection methods, WINTERIA Dark engages in the darknet, extracts, and analyzes the discourse according to the given credentials and the intelligence requirements. Keep your finger on the pulse of the darkest matters of the internet.

# WINTERIA HIGHLIGHTS



- Designed by Intelligence Experts to Leverage and Enhance Investigation Workflow
- Comprehensive, Fully Integrated WEBINT Solution
- Rapid and Sophisticated Data Gathering
- Automated Analysis, Reporting and Alerting
- Profiling and Target Management
- Case Management and Social Listening
- Geofencing, Geolocation and IP Extraction
- Deep Web and Darknet
- Multilingual and Multisource Solution